

APS-363 系列角度传感器 APS-363 Series of Angle Sensor

产品介绍 Product Description

APS-363 系列角度传感器专为各类工业车辆&非道路设备应用而设计。

The APS-363 series of Angle Sensor is specially designed for a variety of industrial vehicles & off-road equipments applications.

非接触式霍尔原理传感器应用,使产品具有超长的使用寿命;坚实、全密封的结构设计,使得产品在恶劣的环境下仍具有优秀的稳定性和可靠性。产品可以安装在驾驶室内,也在露天环境下使用。

With Hall-effect, non-contact sensor equipped, the unit has ultra-long operation life. And robust and full-sealing structural design makes the unit maintain excellent stability and reliability even in rugged environments. The unit can be mounted inside or outside the cab.

与 APS-361 系列出轴不同, APS-363 的连接方式为扁槽(与片状的轴配对)。
Distinguished with shaft output of the APS-361 series, the output of APS-363 is a slot which is driven by a blade shaft.

APS-363 可以实现 180 连续旋转。有顺时针或逆时针弹簧复位两款。

APS-363 has the capability of 180 degree continuous rotation and also available with two version s of clockwise or counterclockwise spring return.

安装孔中心距为 38mm。

The mounting-hole central distance is 38mm.



该系列均为 10-30 VDC,4.5-5.5VDC 供电电压可选。
Power supply voltage of 10-30 VDC and 4.5-5.5 VDC are optional for this model.

产品特点 Product Features

- 标配冗余设计的双输出角度传感器。
Angle sensor with redundant design--dual output as standard.
- 180度机械限位。可订制360度连续旋转。
180 degree mechanical stops available and continuous 360 degree is customizable.
- 顺时针或逆时针弹簧复位两款。
The 180 degree model can achieve clockwise or counterclockwise spring return.
Two version s of clockwise or counterclockwise spring return.
- 防护等级均为IP67。
IP67 protection class.

➤ 主要技术参数 Technical Specifications

机械性能 Mechanical specifications

旋转角度	Mechanical operating angle	180 degree mechanical stops available and continuous 360 degree is customizable.
扭力(弹簧复位)	Spring return force	0.11 Nm max.
机械连接	mechanical connection	Blade Ø9.53 x 2.16 wide
安装孔间距	Mounting center	38mm
出线	Termination	Flying leads,24AWG-6C
使用寿命	Life expectancy	100 万次
重量	Weight	100g with standard 100mm cable

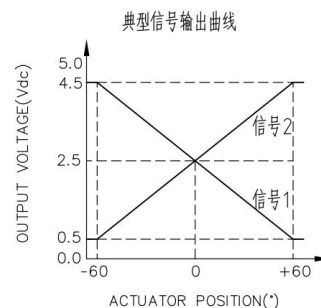
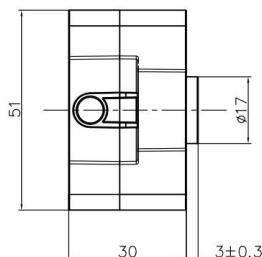
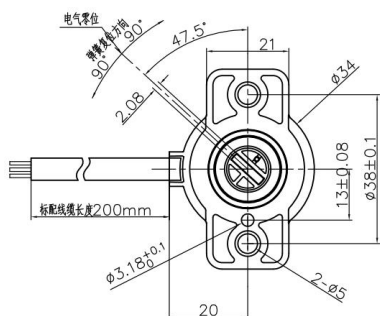
电气性能 Electrical specifications

传感类型	Sensor type	Hall-effect 霍尔
供电电压	Operating Voltage	10-30 Vdc,5±10% Vdc
输出信号	Effective output	APS, PWM,Dual APS, Dual PWM, APS/IVS,CAN(SAE J1939),CAN open
解析率	Resolution	12 bit
精度	Accuracy	Max 1.0% FS
整体线性度	Integral Linearity	±1%
同步度	Integral Correlation	±1%
输出迟滞	delay time of output signal	approx. 3ms
过压保护	Over-voltage proof	yes
电源反接保护	Reverse polarity protection	yes

环境特性 Environmental specifications

工作温度	Operating temp. range	-40°C~125°C
储存温度	Storage temp. range	-40°C~125°C
防护等级	IP Class	IP67
振动测试	Vibration	20g
机械冲击	Mechanical Shock	50g
电磁兼容性	EMI	100V/m
静电	ESD	±8kV (contact discharge)±15kV (air discharge)

➤ 外形&安装尺寸 Mechanical Dimensions(mm)



➤ 编号规则 Product Code Reference

363	A	38	LV	6
产品类别 Product Type	结构形式 Structure type	安装孔中心距 Central Distance	供电电压 Supply Voltage	输出信号 Signal Output
	A	32- 32mm(Model B)	LV- 5±10% Vdc	0- 1-5V, Single(HV)
	B	38- 38mm(Model A)	HV- 10-30 Vdc	1- 4-20 mA, Single (HV)
	C	63- 63.5mm(Model C)		2- 1-5V, Dual(HV)
				3- 4-20mA, Dual (HV)
				4- 0.5-4.5V ratiometric, Dual(LV)
				6- 0.5-4.5V ratiometric, Single(LV)
				7- 0.5-4.5V, Single(HV)
				8- 0.5-4.5V, Dual(HV)
				9- 0-5V, Single(HV)
				O- CAN open
				J- CAN J1939

180		
测量角度 Rotary Angle	旋转方向 Rotary Orietation	其它订制信息 Other Customized Details
3 digits, eg.: 090-90°, 180- 180°	Blank- counter clockwise	Cable length, connectors etc 线缆长度、连接器等
	X- clockwise 顺时针	

➤ **应用 Applications**

应用于高空作业车、叉车、农机、摊铺机、桩工机械等各类搬运&非道路设备的角度控制。

The APS-363 series of Angle Sensor is widely applied to angle sensing and control of various industrial vehicles, agricultural machines & off-road equipments such as aerial work platforms, forklifts, pavers, and drilling rigs etc.

