

APS-362 方向盘角度传感器
APS-362 Steering Angle Sensor**产品介绍 Product Description**

APS-362 系列是一款坚固耐用、高可靠性、高精度的霍尔原理非接触式位置传感器。薄形和通孔设计使其非常适用于方向盘和动臂角度等空间有限、传感器必须绕轴安装等的应用。

The APS-362 Series is robust, reliable, and highly accurate non-contacting position sensors. Its low profile and through-hole design make it desirable for applications like steering wheel and boom angle, where space is limited and the sensor must mount around a shaft.

产品特点 Features:

- 结构紧凑
Compact design
- 非接触式原理保证了产品的高寿命
Non-contacting technology Provides long life
- IP65密封
IP65 sealing
- 360度连续旋转
360 degree continuous rotation
- 输出信号可选: 模拟量、PWM、CAN等
Output signal choices :Analog, PWM, CAN Bus
- 电气连接: 标配750mm飞线, 多种连接器可选
Standard fly lead, connectors optional
- 机械连接: 转换接头或安装法兰可选
Mechanical installation: adapters or flanges optional

**应用 Application**

APS 应用于农机、矿卡等各类非道路&移动设备的角度控制。It is applied to angle sensing and control of various off-road & fleet equipments such as agricultural machinery and mining trucks etc.



➤ 主要技术参数 General Specifications

机械性能 Mechanical characteristics

旋转角度	Mechanical travel	Continuous 360° rotation
启动扭矩	Actuation (starting) Torque	≤ 0.2 Nm
寿命	Rotational life	10 million cycles
重量	Weight	220g

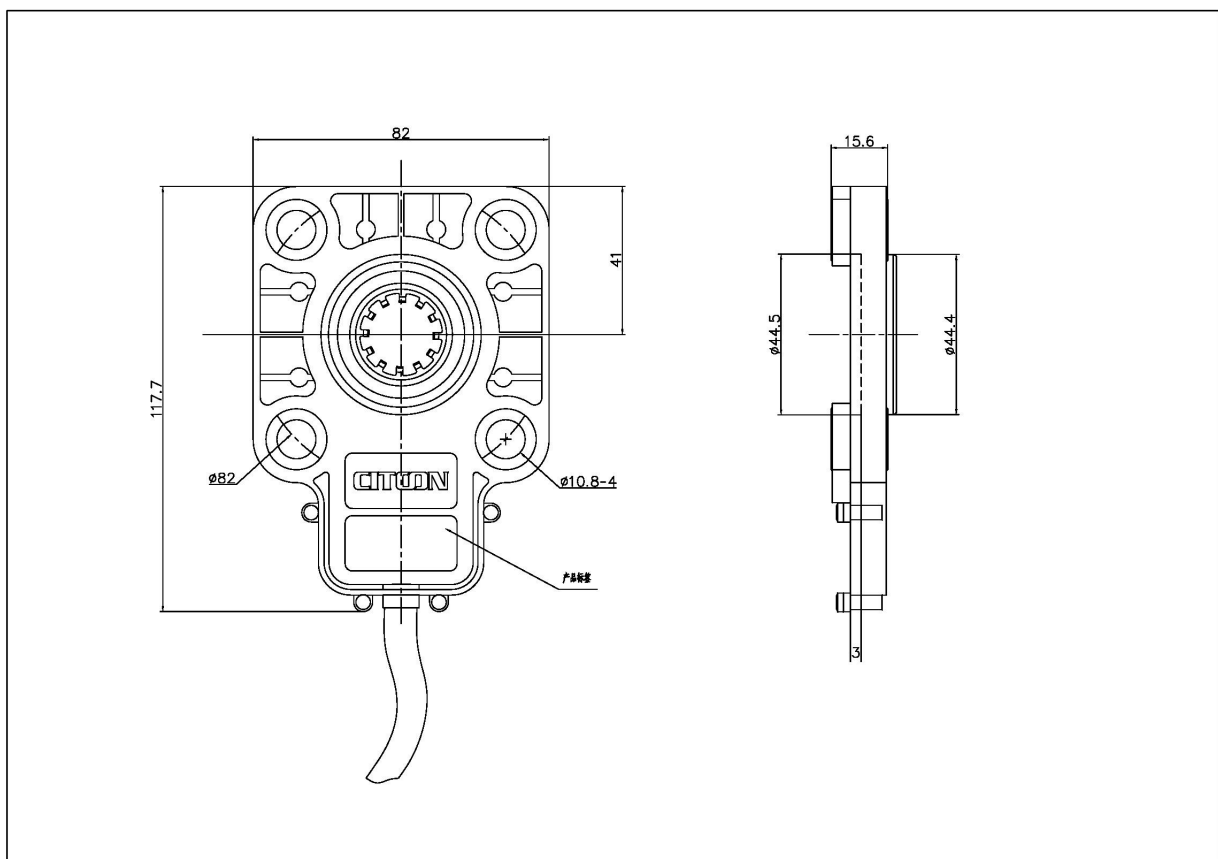
电气参数 Electrical specifications

电气角度	Electrical angle	0°~+360°连续旋转
工作电压	Input voltage	9-32VDC
功率消耗	Power consumption	<1W
输出信号	Output Signal	Analog 模拟量, PWM, CAN
解析率	Resolution	<0.1°
线性度	Linearity	±1.0%

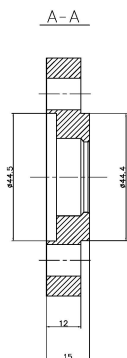
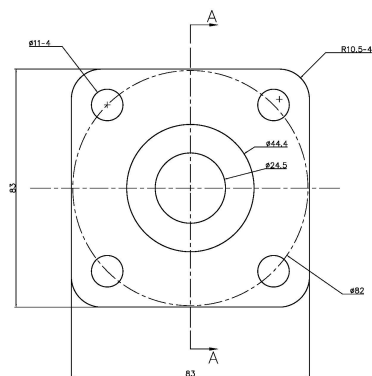
环境特性 Environmental specifications

工作温度	Operating temp. range	-40°C~105°C
储存温度	Storage temp. range	-40°C~125°C
防护等级	IP Class	IP65
振动测试	Vibration	20g
机械冲击	Mechanical Shock	50g
电磁兼容性	EMI	100V/m
静电	ESD	±8kV (contact discharge)±15kV (air discharge)

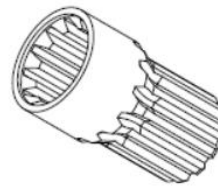
➤ 外形&安装尺寸 Mechanical Dimensions(mm)



配套安装法兰



配套花键转接头



花键转接头参数 spline specs:

齿数 tooth: 12

压力角 Pitch Angle: 30°

径节 Diametral Pitch: 16/32

分度圆直径 Pitch Diameter: 19.05mm

最大直径 Largest Diameter: $20.3 \pm 0.1\text{mm}$

最小直径 Smallest Diameter: $16.5 \pm 0.5\text{mm}$