

CT-550 油门旋钮**CT-550 Hand Throttle Control****➤ 产品介绍 Product Description**

CT-550 系列油门旋钮专为各类非道路&移动设备应用而设计。

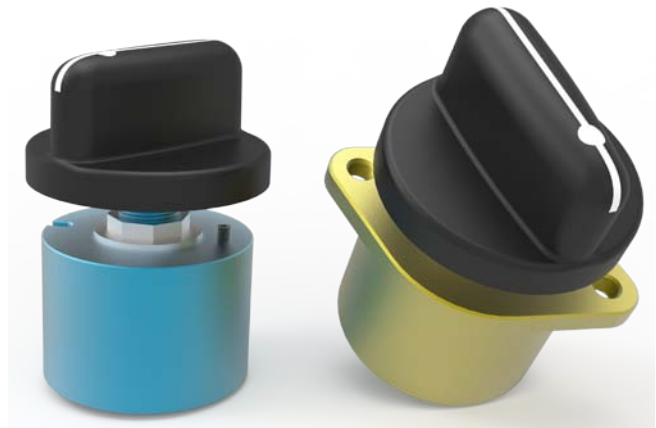
The CT-550 Rotary Hand Control is specially designed for a variety of off-road & fleet equipments applications.

非接触式霍尔原理传感器的应用,使产品具有超长的使用寿命;坚实、全密封的结构设计,使得产品在恶劣的环境下仍具有优秀的稳定性和可靠性。产品可以安装在驾驶室内,也在露天环境下使用。

With Hall-effect, non-contact sensor equipped, the unit has ultra-long operation life. And robust and full-sealing structural design makes the unit maintain excellent stability and reliability even in rugged environments. The unit can be mounted inside or outside the cab.

CT-550 系列油门旋钮有带档位和不带档位两款。带档位的共有 12 个档位。不带档位的设置旋转摩擦机构。两款产品都可以使操作手清晰地感知油门的位置,同时也可以避免因机器振动而引起的油门误动作。带档位和不带档位的外壳颜色分别为宝石蓝色和土豪金色。

The CT-550 Rotary Hand Control is available with two versions - with and without gears. The version with gears has a total of 12 gears. The version without gears is equipped with rotational friction mechanism. Both versions allow the operator distinctly senses the position of the throttle, also avoid possible throttle mal-operation caused by equipments vibration. The housing color is jewelry blue for the version with gears and golden for the version without gears.



表面氧化处理的铝合金外壳具有良好的强度和耐腐蚀性。二次包胶的旋钮帽具有良好的触感。

The anodized aluminum shell has improved strength and corrosion resistance. The knob is over-molded with thermoplastic elastomer for improved tactile feel.

CT-550 标准产品的旋转角度为 90° , 也可定制其它旋转角度。

The CT-550 standard rotation angle is 90° , and other rotation angles can also be customized.

CT-550 标配 200mm 的线缆和 Deutsch 三针、四针 或 AMP 六针连接器。线缆长度和连接器类型可定制。

The CT-550 comes standard with 200mm leads and Deutsch 3-pin or AMP 6-pin connectors. The length of the leads and other models of connectors can be customized.

➤ 主要技术参数 General Specifications

通用参数 General Specifications		
工作环境温度	Operating Temp.	-40°C~85°C
储存环境温度	Storage Temp.	-40°C~125°C
使用寿命	Product life	50 万次
精度	Accuracy	Max 2.0% FS
整体线性度	Integral Linearity	±1%
同步度	Integral Correlation	±1%
迟滞	Hysteresis	<1.0%
重量	Weight	140g
机械性能 Mechanical characteristics		
旋转角度	Rotary angle	90°
连接器	Connector	Deutsch DT Series, AMP 174264-2
启动扭矩	Actuation Torque(to start motion)	0.21 to 0.7 Nm
全行程位置扭矩	End-stops Torque	4.5Nm Max
电气参数 Electrical specifications		
工作角度	Rotary Angle	90°
供电电压,Vs	Operating Voltage, Vs	5.0 ±10% Vdc
最大供电电压, Vs	Operating Voltage Max, Vs	8 Vdc
输出信号	Output Signal	Dual APS, Dual PWM, APS, PWM, APS/IVS,CAN(SAE J1939),CAN open
输出电流	Output Current	Max. 1.0 mA per output
环境测试 Environmental Pratices		
热循环测试	Thermal Cycling Test	24 hr thermal cycle,SAE J1455, -40°C to +85°C 24 小时热循环,实验温度为-40°C 至+85°C SAE J1455-2006
湿度测试	Humidity Test	120 hr exposure at 95% RH from +27°C to +75°C 置于温度+27°C 至+75°C, 湿度 95%的环境箱中暴露 120 小时 SAE J1455-2006
振动测试	Vabrition Test	Swept sine vibration,10 cycle,vertical,10HZ(35%)~55HZ(65%),120S. Transversel/longitudinal axis,10HZ(25%)~55HZ(65%),120S SAE J1455-2006 可程扫频: 1 段,垂直,10HZ(35%)~55HZ(65%),120S 2 段,水平,10HZ(25%)~55HZ(65%),120S 10 个循环 one meter drop to concrete floor
机械冲击	Mechanical Shock Test	机械冲击: 参考 SAE J1455, 将样品从 1 米高处向下跌落, 测试样品各项性能在规格范围内 SAE J1455-2006

密封等级

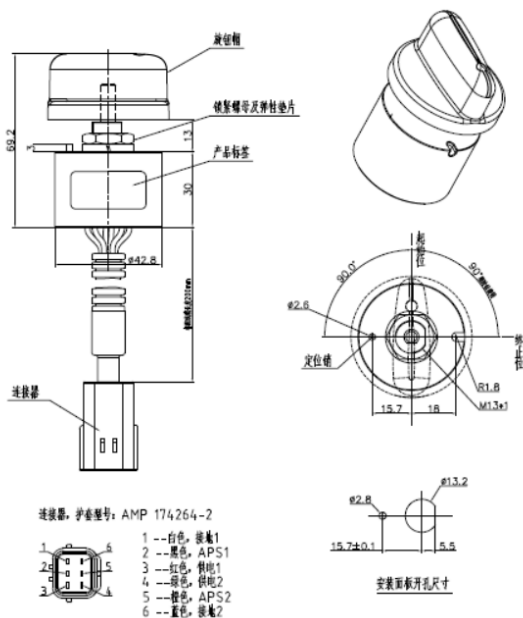
IP Class

1m depth for 24 hours in water tank

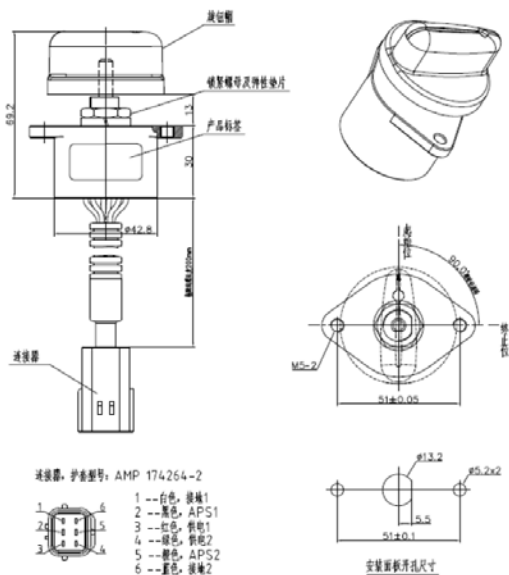
浸水箱中 1m 深处放置 24 小时

IEC 60529-2013/GB/T 4208-2017

➤ 外形&安装尺寸 Mechanical Dimensions(mm)

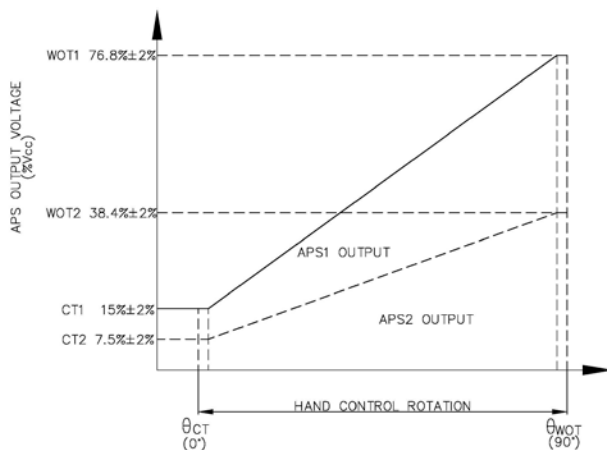


帶檔位款



不帶檔位款

典型输出信号曲线 Typical Output Characteristics



➤ 应用 **Applic**

应用于挖机、推土机、钻机、农机、移动式空压机等各类非道路&移动设备的手动油门控制。

It is applied to hand throttle control of various off-road & fleet equipments such as excavators, bulldozers, drilling rigs, agricultural machinery, and mobile air compressors etc.

